

Question No : 1 of 26

Marks: 1 (Budgeted Time 1 Min)

The state transition diagram \_\_\_\_\_

Answer ( Please select your correct option )

- ☐ Depicts relationships between data objects
- ☐ Depicts functions that transform the data flow
- ☐ Indicates how data are transformed by the system
- ☒ Indicates system reactions to external events

Correct answer solved by hadi  
Cell No:03228043306  
Email: usmanraj20@gmail.com

**Made By: Waqar Siddhu**

Question No : 2 of 26

Marks: 1 (Budgeted Time 1 Min)

Domain model is \_\_\_\_\_ step in making an efficient system.

Answer ( Please select your correct option )



Initial



Secondary



Last



Middle

**Made By: Waqar Siddhu**

Question No : 3 of 26

Marks: 1 (Budgeted Time 1 Min)

CRUD operations do not include \_\_\_\_\_

Answer ( Please select your correct option )

☐ Create

☐ Read

☐ Update

☒ Flow

Correct answer solved by hadi  
Cell No:03228043306  
Email: usmanraj20@gmail.com

**Made By: Waqar Siddhu**

Question No : 4 of 26

Marks: 1 (Budgeted Time 1 Min)

In a ....., each program module is represented by a rectangular box.

Answer ( Please select your correct option )



Use case diagram



Document flow diagram



Class diagram



Data flow diagram

**Made By: Waqar Siddhu**

Question No : 5 of 26

Marks: 1 (Budgeted Time 1 Min)

"isAuthorized", "assess Performance", are the examples of

Answer ( Please select your correct option )

☐ Properties

☒ Services

☐ Attributes

☐ Links

Correct answer solved by hadi  
Cell No:03228043306  
Email: usmanraj20@gmail.com

**Made By: Waqar Siddhu**

Question No : 6 of 26

Marks: 1 (Budgeted Time 1 Min)

What would be the most suitable architecture to develop a commercial web page to do business transactions over the internet?

Answer ( Please select your correct option )

☒ Client server model

☐ Island model

☐ RAD model

☐ Repository model

**Made By: Waqar Siddhu**

Question No : 7 of 26

Marks: 1 (Budgeted Time 1 Min)

UML (unified modeling language) analysis modeling focuses on the \_\_\_\_\_.

Answer ( Please select your correct option )

☐ Behavioral model and environment model.

☐ Behavioral model and implementation model.

☐ User model and environmental model

☒ User model and structural model

Correct answer solved by hadi  
Cell No:03228043306  
Email: usmanraj20@gmail.com

**Made By: Waqar Siddhu**

Question No : 8 of 26

Marks: 1 (Budgeted Time 1 Min)

The vertical dotted lines in sequence diagram represent \_\_\_\_\_

Answer ( Please select your correct option )

☐ Creation of objects

☒ Life line of objects

☐ Structure of objects

☐ Services of objects

**Made By: Waqar Siddhu**



Question No : 9 of 26

Marks: 1 (Budgeted Time 1 Min)

40-60% of all defects found in software projects can be traced back to poor \_\_\_\_\_

Answer ( Please select your correct option )

☒ Requirements

Correct answer solved by hadi  
Cell No:03228043306  
Email: usmanraj20@gmail.com

☐ Design

☐ Coding

☐ Testing

**Made By: Waqar Siddhu**

Question No : 10 of 26

Marks: 1 (Budgeted Time 1 Min)

A SRS is said to be \_\_\_\_\_ if and only if, every requirement stated therein has only one interpretation.

Answer ( Please select your correct option )

☐ Compact

☒ Unambiguous

☐ Consistant

☐ Detailed

**Made By: Waqar Siddhu**

Question No : 11 of 26

Marks: 1 (Budgeted Time 1 Min)

Which of the following is NOT among directly related construction activities of software development?

Answer ( Please select your correct option )

☒ Management

Correct answer solved by hadi  
Cell No:03228043306  
Email: usmanraj20@gmail.com

☐ Testing

☐ Requirements Elicitation

☐ Design development

**Made By: Waqar Siddhu**

Question No : 12 of 26

Marks: 1 (Budgeted Time 1 Min)

The \_\_\_\_\_ relationship is kind of a generalization-specialization relationship.

Answer ( Please select your correct option )

☐ Composition

☐ Uses

☐ Association

☒ Extends

**Made By: Waqar Siddhu**

Question No : 13 of 26

Marks: 1 (Budgeted Time 1 Min)

\_\_\_\_\_ relationship is concerned with classes not with the class instances.

Answer ( Please select your correct option )

☐ Aggregation

☒ Inheritance

☐ Composition

☐ Association

Correct answer solved by hadi  
Cell No:03228043306  
Email: usmanraj20@gmail.com

**Made By: Waqar Siddhu**

Question No : 14 of 26

Marks: 1 (Budgeted Time 1 Min)

\_\_\_\_\_ activities are directly related to software development.

Answer ( Please select your correct option )

☒

Construction

☐

Management

☐

Quality assurance

☐

Project planning

**Made By: Waqar Siddhu**

Question No : 15 of 26

Marks: 1 (Budgeted Time 1 Min)

Two components of use-case model are actors and \_\_\_\_\_.

Answer ( Please select your correct option )

☐ Functional requirements

☐ Processes

☒ Use-cases

Correct answer solved by hadi  
Cell No:03228043306  
Email: usmanraj20@gmail.com

☐ System boundary

**Made By: Waqar Siddhu**

Question No : 16 of 26

Marks: 1 (Budgeted Time 1 Min)



\_\_\_\_\_ is not the part of Peter Coad methodology.

Answer ( Please select your correct option )

☐ Select actors

☐ Select participants

☐ Select places

*4. Select Transactions*

*5. Select Container Objects*

*6. Select Tangible things*

☐ Select actions

**Made By: Waqar Siddhu**



Question No : 17 of 26

Marks: 1 (Budgeted Time 1 Min)

Transactions are the \_\_\_\_\_ that must be remembered through time.

Answer ( Please select your correct option )

☒

Events

*pg: 93*

Correct answer solved by hadi  
Cell No:03228043306  
Email: usmanraj20@gmail.com

☐

Actions

☐

Triggers

☐

Methods

**Made By: Waqar Siddhu**

Question No : 18 of 26

Marks: 1 (Budgeted Time 1 Min)

The verbs in your problem domain usually indicate some of the \_\_\_\_\_ required of the associated object.

Answer ( Please select your correct option )

☒

Services

☐

Objects

☐

Collaborations

☐

Actors

**Made By: Waqar Siddhu**

Question No : 19 of 26

Marks: 1 (Budgeted Time 1 Min)

For purpose of behavior modeling, a state is any \_\_\_\_\_.

Answer ( Please select your correct option )

☐ Consumer or producer of data

☐ Data object hierarchy

☒ Observable mode of behavior

☐ Well defined process

**Made By: Waqar Siddhu**

Question No : 20 of 26

Marks: 1 (Budgeted Time 1 Min)

A complex System evolves from a \_\_\_\_\_.

Answer ( Please select your correct option )

☐ Smaller system

☒ Simpler system

☐ Bigger system

☐ Medium system

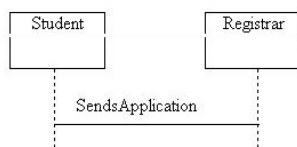
Correct answer solved by hadi  
Cell No:03228043306  
Email: usmanraj20@gmail.com

**Made By: Waqar Siddhu**

Question No : 21 of 26

Marks: 2 (Budgeted Time 4 Min)

Identify the object(s) from the following sequence diagram:



Answer ( [Please click here to Add Answer](#) )



*Answer: Object: Student and Application.*

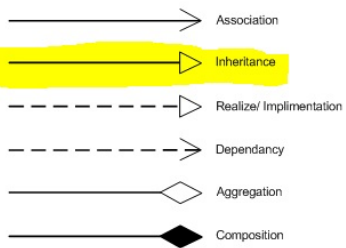
**Made By: Waqar Siddhu**

Question No : 22 of 26

Marks: 2 (Budgeted Time 4 Min)

As a software designer, you are assigned to prepare the Class diagram for the object Model. What is the notation for showing Inheritance relationship?

Answer



**Made By: Waqar Siddhu**

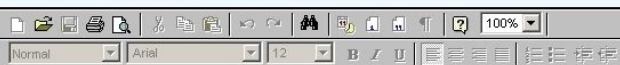
Question No : 23 of 26

Marks: 3 (Budgeted Time 6 Min)

Define following:-

- 1) Synchronous Messages
- 2) Asynchronous messages

Answer ( [Please click here to Add Answer](#) )



*Asynchronous messages are "signals," denoted by a half arrow. They do not block the caller. Asynchronous messages typically perform the following actions:*

- ❖ *Create a new thread*
- ❖ *Create a new object*
- Communicate with a thread that is already running*

*Synchronous Messages:-*

*Synchronous messages are "call events" and are denoted by the full arrow. They represent nested flow of control which is typically implemented as an operation call. In case of a synchronous message, the caller waits for the called routine to complete its operation before moving forward.*

**Made By: Waqar Siddhu**

Question No : 24 of 26

Marks: 3 (Budgeted Time 6 Min)

Ali is considered as an object. What are the characteristics which decide Ali is an Object?

Answer ( [Please click here to Add Answer](#) )

Normal Arial 12 B I U

*Answer: Ali could be a person, a student, or employee.  
he will have characteristic which tell his class for which class of object it is.*

**Made By: Waqar Siddhu**



Question No : 25 of 26

Marks: 5 (Budgeted Time 10 Min)

Consider the following five code fragments.

1	2	3
<pre>class File { void OpenFile () { ... } void SearchIndex () { ... } void CloseFile () { ... } }</pre>	<pre>class AreaFun { double CircleArea() { ... } double RectangleArea() { ... } } double TriangleArea() { ... } }</pre>	<pre>class MyClass { void OpenFile () { ... } void SearchIndex () { ... } void InitPrinter () { ... } void Print index { ... } }</pre>
4	5	
<pre>class POST { void CheckPower () { ... } void InitializeDisc () { ... } void LoadBootstrap () { ... } }</pre>	<pre>Class MakeSoup { void BoilWater () { ... } Void AddIngredients () { ... } void MixIngredients () { ... } void ServeSoup () { ... } }</pre>	

answer: 3

Which of the above code fragments show the weakest level of cohesion? Brief it with reason.

**Made By: Waqar Siddhu**

**Marks: 5 (Budgeted Time 10 Min)**

Answer ( Please [click here](#) to Add Answer )

analyzed on the basis of their characteristics , behaviour and states. things with same (all these) will be in same class. if we need many items of same (all these things) we will define a class for them.

**Made By: Waqar Siddhu**